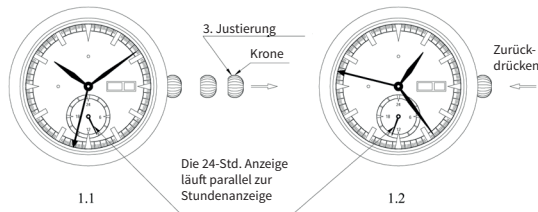
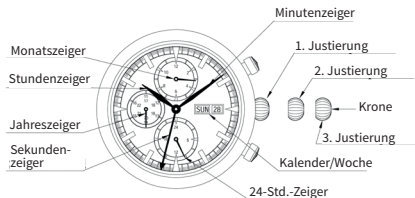
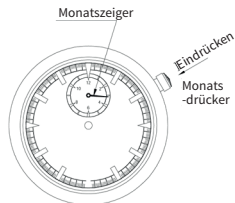


Anleitung für die Modelle 345214 + 345213 Einstellen der Zeit:

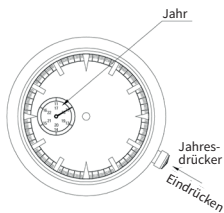


Beachten Sie: Drücker sollten nicht während der Zeit von 21:00-3:00 Uhr betätigt werden, da sonst das Werk beschädigt werden kann.

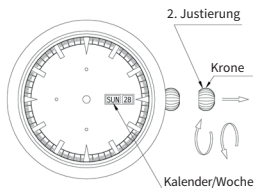
Einstellen des Monats:



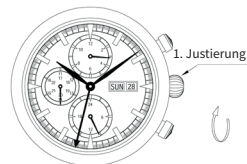
Einstellen des Jahres:



Einstellen des Kalenders/Datum:



Aufziehen des Uhrwerks:



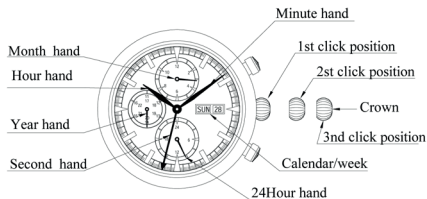
Selva
Exklusiv Edition

Selva Technik Deutschland
Christian-Messner-Straße 29
78647 Trossingen
service@selva.de
Support: 07425 930300

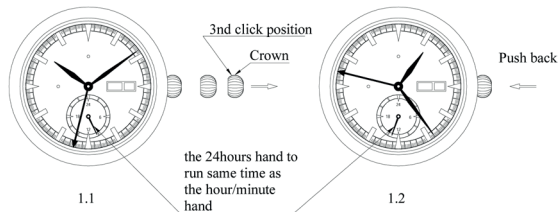
Selva Technik Suisse
Postfach/Case Postale 333
1723 Marly 1 / Schweiz
service@selva.de
Support: 026-439 92 40

Selva Technik Austria
Hiefbauerstrasse 3
8790 Eisenerz / Österreich
service@selvatime.at
Support: 03848 / 2213

Specification 345214 + 345213

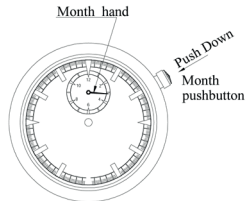


Adjust the time:

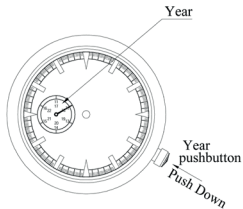


Important notice : 1. Push-buttons must not be used during the period of 9pm (evening) till 3am (morning), as otherwise the movt will be damaged.

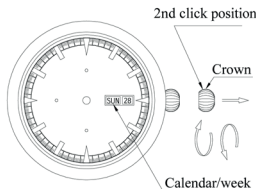
Adjust the Month



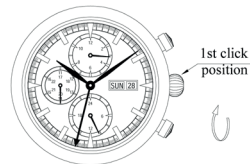
Adjust the Year



Adjust the Calendar and week



Tighten up mainspring



Selva
Exklusiv Edition

Selva Technik Deutschland
Christian-Messner-Straße 29
78647 Trossingen
service@selva.de
Support: 07425 930300

Selva Technik Suisse
Postfach/Case Postale 333
1723 Marly 1 / Schweiz
service@selva.de
Support: 026-439 92 40

Selva Technik Austria
Hieflauerstrasse 3
8790 Eisenerz / Österreich
service@selvatime.at
Support: 03848 / 2213